

**PBS**  
 • Engineering  
 • Environmental Consulting  
 • Surveying

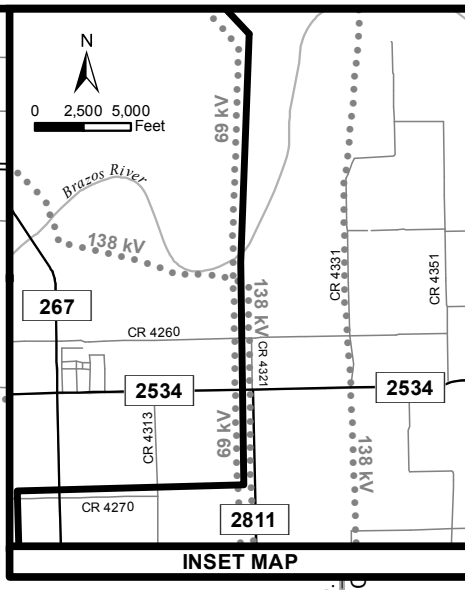
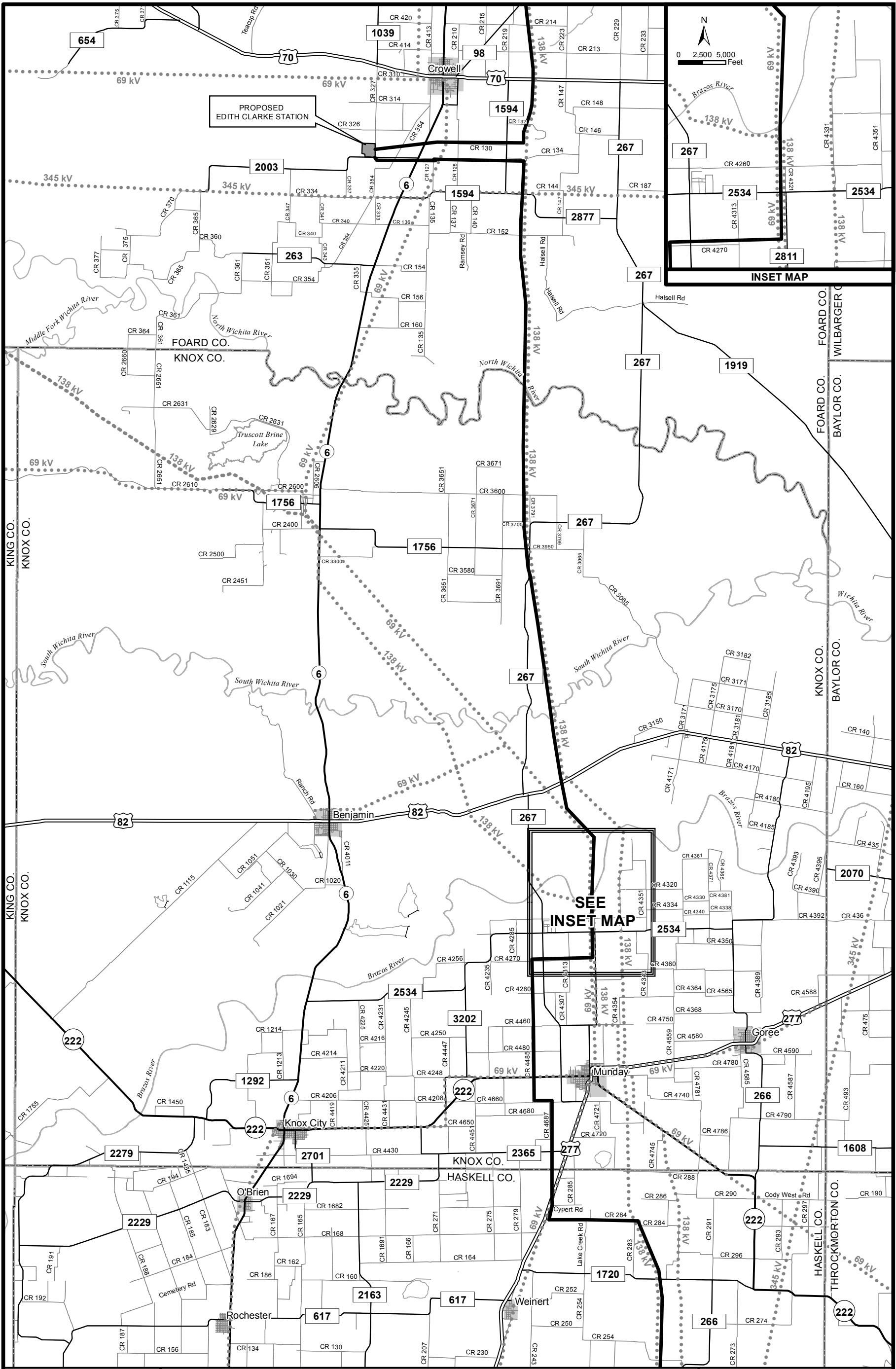
— Approved Route  
 ..... Existing Transmission Line

0 0.9 1.8 2.7 3.6 Miles

Base Map: TXDOT County Urban and STRATMAP Road Files

**Tesla to Edith Clarke to Clear Crossing to West Shackelford 345-kV CREZ Transmission Line**  
 Sheet 1 of 3

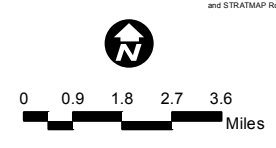
**ETT**  
 Electric Transmission Texas



SEE  
INSET MAP

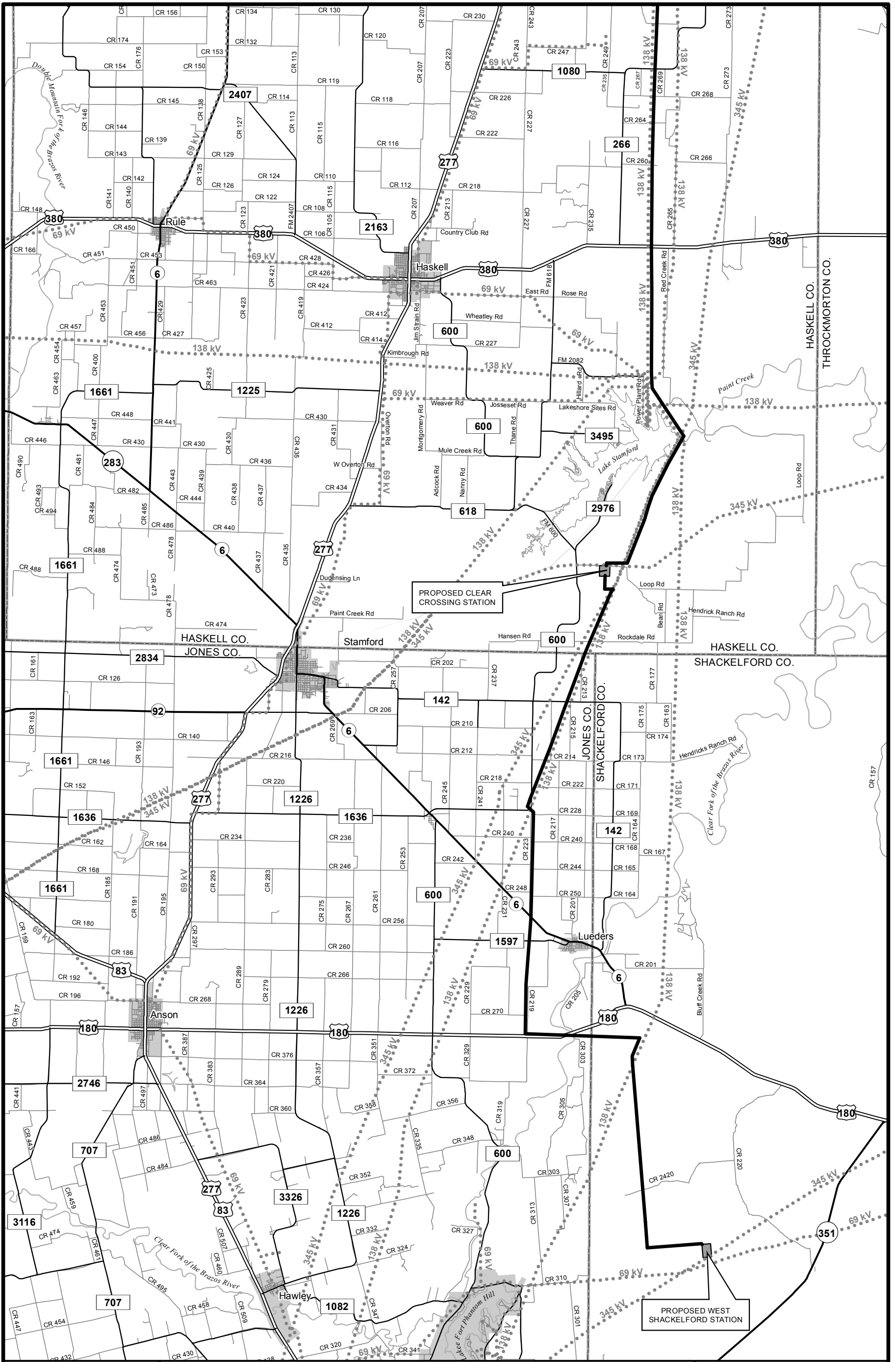
**PBS**  
 • Engineering  
 • Environmental Consulting  
 • Surveying

— Approved Route  
 ..... Existing Transmission Line



Base Map: TxDOT County Urban and STRATMAP Road Files

Tesla to Edith Clarke to Clear Crossing to West Shackelford  
 345-kV CREZ Transmission Line  
 Sheet 2 of 3  
**ETT**  
 Electric Transmission Texas



**PBS!**

- Engineering
- Environmental Consulting
- Surveying

Approved Route  
 Existing Transmission Line

  
 0 0.9 1.8 2.7 3.6 Miles  


Tesla to Edith Clarke to Clear Crossing  
 to West Shackelford  
 345-kV CREZ Transmission Line  
 Sheet 3 of 3

  
**ETT**  
 Electric Transmission Texas